



Your Safety...Our Commitment

ABB Ability™

Mobile gas leak detection system



Contents

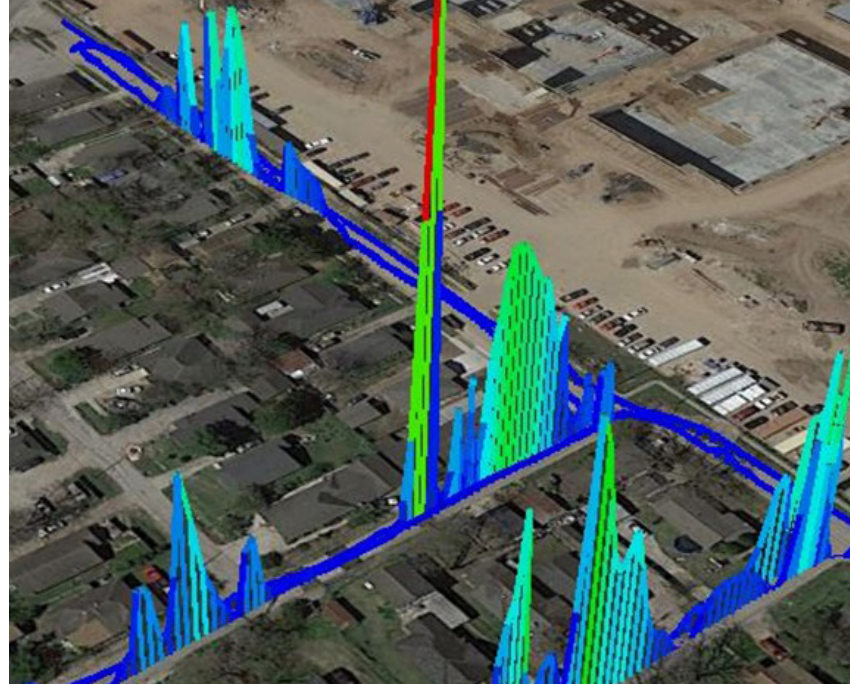
Customer challenges

How it works

Advantages

Customer benefits

Finds leaks fast and shares real-time data with stakeholders via the Cloud



Customer challenges

Traditional leak detection processes do not meet today's demands for fast, accurate and transparent data. Utilities, as well as gas transmission and distribution companies, face increased challenges with pipeline monitoring and compliance due to:

- Aging infrastructure
- Regulatory pressure
- Desire to reduce emissions
- Reliance on paper based systems
- Pressure to reduce cost
- Need for data transparency

How it works

The ABB Ability™ mobile gas leak detection system consists of ABB's Methane/Ethane Analyzer, a GPS, a sonic anemometer and proprietary leak detection software that presents real-time geospatial maps of multiple gas concentrations in real time. The software's sophisticated leak detection algorithm combines the system's measurements of gas concentrations (CH_4 , C_2H_6), local coordinates (GPS) and local wind velocity (sonic anemometer) to estimate the location of the leak. Readings are stored in the device and can be transmitted in real-time to the Cloud for centralized monitoring.

Advantages

The ABB Ability™ mobile gas leak detection system uses ABB's patented LGR Off-Axis Integrated Cavity Output Spectroscopy (OA-ICOS) technique which has a sensitivity and precision more than 3000 times greater than legacy methods. This enables identification of leaks several hundred feet away from the source.

Key customer benefits

- **High reliability:** Measures both methane & ethane to eliminate false positives
- **Save time:** Begin finding leaks less than 2 minutes after power on (competitive methods require 30-45 minutes to thermally stabilize and internally calibrate)
- **Less maintenance:** OA-ICOS, a 4th generation cavity enhanced technique, is far more robust compared with competitive CRDS technologies
- **Lower operating cost:** Customer owns the instrument and all data
- **Transparent:** Data available everywhere, immediately, through Cloud-based reporting
- **Rugged and flexible:** Can be mounted on a vehicle, ATV, aircraft or large drone



Your Safety...Our Commitment

Contact:

Paul D. Wehnert
Heath Consultants Incorporated
9030 Monroe Road
Houston, TX 77061
Direct: 713-844-1391
p.wehnert@heathus.com