

Survey Tracker

Data Logging Software for the DP-IR® and the OMD™



The Heath Survey Tracker provides utility companies the opportunity to log mobile leak survey data and GPS locations of all natural gas leaks detected.

Data recorded includes:

- Username
- Date
- Time
- Location - based on GPS
- Alarm Levels
- Leak Detection Level
- Speed of Vehicle

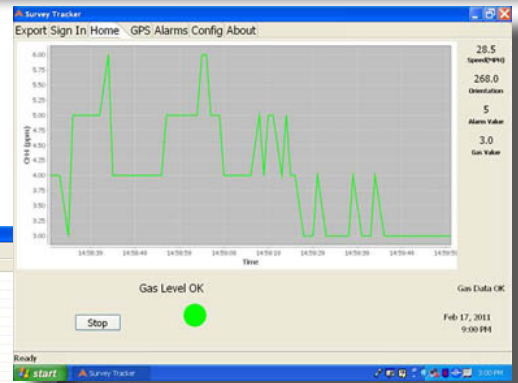
EQUIPMENT NEEDED:

- Computer
- DP-IR or OMD
- Garmin Mobile PC Kit
- Heath Survey Tracker CD
- Garmin's Global Positioning System (GPS) 20x Receiver
- Serial Cable

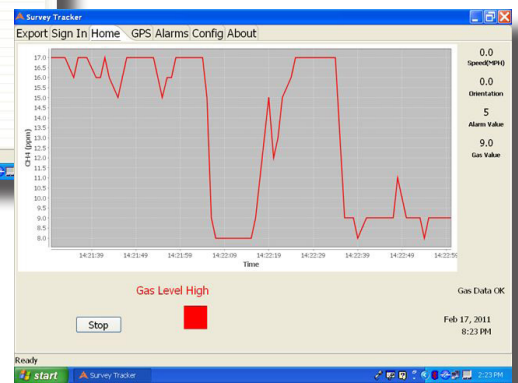
Note:
The functionality of the Heath Survey tracker has been verified using the Garmin Mobile PC Kit, including Garmin's high-sensitivity GPS 20x Receiver. Other manufacturers may be considered for future use with the Heath Survey Tracker.

Number	Gas Value	Date	Time	Latitude	Longitude	Speed(MPH)
8.0	Feb 17, 2011	2:30 PM	29° 38' 14.322968"	-95° 15' 54.060207"	7.9	
8.0	Feb 17, 2011	2:30 PM	29° 38' 14.322968"	-95° 15' 53.887939"	8.3	
8.0	Feb 17, 2011	2:30 PM	29° 38' 14.343957"	-95° 15' 53.809542"	8.1	
8.0	Feb 17, 2011	2:30 PM	29° 38' 14.343957"	-95° 15' 53.666213"	6.4	
7.0	Feb 17, 2011	2:30 PM	29° 38' 14.322968"	-95° 15' 53.558390"	4.9	
7.0	Feb 17, 2011	2:30 PM	00° 22' 00.000000"	00° 20' 59.999999"	3.5	
7.0	Feb 17, 2011	2:30 PM	29° 38' 14.302368"	-95° 15' 53.393955"	6.7	
7.0	Feb 17, 2011	2:30 PM	29° 38' 14.246570"	-95° 15' 53.286288"	7.5	
7.0	Feb 17, 2011	2:30 PM	29° 38' 14.151306"	-95° 15' 53.301294"	8.7	
7.0	Feb 17, 2011	2:30 PM	00° 22' 00.000000"	00° 24' 00.000004"	10.4	
7.0	Feb 17, 2011	2:30 PM	29° 38' 13.807863"	-95° 15' 53.148766"	18.2	
8.0	Feb 17, 2011	2:30 PM	29° 38' 13.881390"	-95° 15' 53.063965"	20.0	
8.0	Feb 17, 2011	2:31 PM	29° 38' 13.724204"	-95° 15' 53.063965"	23.1	
8.0	Feb 17, 2011	2:31 PM	29° 38' 12.915344"	-95° 15' 53.063965"	26.4	
8.0	Feb 17, 2011	2:31 PM	29° 38' 12.523956"	-95° 15' 53.009033"	29.1	
8.0	Feb 17, 2011	2:31 PM	29° 38' 12.385103"	-95° 15' 53.009033"	31.6	
14.0	Feb 17, 2011	2:31 PM	29° 38' 11.631311"	-95° 15' 53.009033"	33.6	
17.0	Feb 17, 2011	2:31 PM	00° 22' 00.000000"	00° 24' 00.000004"	35.6	
18.0	Feb 17, 2011	2:31 PM	29° 38' 10.635681"	-95° 15' 52.361357"	36.7	
18.0	Feb 17, 2011	2:31 PM	00° 22' 00.000000"	00° 24' 00.000004"	38.6	
18.0	Feb 17, 2011	2:31 PM	29° 38' 09.550791"	-95° 15' 52.361357"	38.8	
18.0	Feb 17, 2011	2:31 PM	29° 38' 08.987732"	-95° 15' 52.326636"	39.6	
18.0	Feb 17, 2011	2:31 PM	29° 38' 08.404083"	-95° 15' 52.326636"	40.4	
13.0	Feb 17, 2011	2:31 PM	29° 38' 07.820438"	-95° 15' 52.326636"	40.6	
9.0	Feb 17, 2011	2:31 PM	29° 38' 07.236706"	-95° 15' 52.326636"	40.6	
11.0	Feb 17, 2011	2:31 PM	29° 38' 06.653137"	-95° 15' 52.844238"	40.9	
10.0	Feb 17, 2011	2:31 PM	29° 38' 06.068889"	-95° 15' 52.844238"	41.2	
8.0	Feb 17, 2011	2:31 PM	29° 38' 05.483150"	-95° 15' 52.844238"	41.3	
8.0	Feb 17, 2011	2:31 PM	29° 38' 04.847260"	-95° 15' 52.844238"	41.3	
7.0	Feb 17, 2011	2:31 PM	29° 38' 04.268789"	-95° 15' 52.789307"	41.1	
7.0	Feb 17, 2011	2:31 PM	29° 38' 03.639369"	-95° 15' 52.789307"	40.9	
7.0	Feb 17, 2011	2:31 PM	29° 38' 03.057514"	-95° 15' 52.789307"	40.2	
7.0	Feb 17, 2011	2:31 PM	29° 38' 02.482055"	-95° 15' 52.789307"	39.8	
12.0	Feb 17, 2011	2:31 PM	00° 22' 00.000000"	00° 24' 00.000004"	39.4	

Data chart created by Survey Tracker.



Acceptable gas level chart.



High gas level alarm chart.

Heath Consultants Incorporated
713/844-1300 • Fax: 713/844-1309
1-800-HEATH-US • www.heathus.com